

生产许可证编号：浙食药监械生产许201411023号

产品标准编号：YZB/浙4493-2014

注册证编号：浙械注准20142100295

*Boly*  
Medical  
博列医疗

## 宁波博列医疗设备有限公司

NINGBO BOLY MEDICAL EQUIPMENT CO.,LTD.

厂址：浙江余姚山开发区  
Factory: Moushan Development Zone, Yuyao, Zhejiang Province, China  
网址(Website): [www.bolymedical.com](http://www.bolymedical.com)

外销部地址：浙江余姚塑料城国际商务中心3幢306室  
Export dept add: Room 306, No.3 Building, International Business Center, Plastic City, Yuyao, Zhejiang Province, China  
电话(Tel): 0086-574-62481886 传真(Fax): 0086-574-62481880  
邮箱 (E-mail): [sales@bolymedical.com](mailto:sales@bolymedical.com)

内销部地址：上海闸北区江场西路299弄中铁时代广场6幢1211室  
Sales dept add: Room 1211, No. 6 Building, Zhongtie Times Square, No. 299 West Jiangchang Rd, Zhabei District, Shanghai, China  
电话(Tel): 0086-21-66075681 传真(Fax): 0086-21-66075682



2016/Catalogue

宁波博列医疗设备有限公司  
NINGBO BOLY MEDICAL EQUIPMENT CO.,LTD.



ISO13485



# Brief Introduction

宁波博列医疗设备有限公司位于中国历史文化名城——余姚，是专业生产骨科医疗器械的现代化企业。宁波博列医疗设备有限公司是英国博列公司在中国大陆授权的独家生产基地。公司主要产品为医用电动锯钻系列，骨科器械包系列以及医用止血带等外科手术用品。

公司自有研发团队，技术力量雄厚，工艺设备先进，已通过ISO13485, FDA, CE等多项国际认证。

公司秉承“向质量要市场，向管理要效益”的理念，以市场为导向，全面推进科技创新，打造核心竞争力，持续为客户创造更大价值，将公司不断壮大。

Ningbo Boly Medical Equipment Co., Ltd is located in historic and cultural city – Yuyao, as a modern enterprise specializing in production of orthopedic medical equipments and instruments. Ningbo Boly is the authorized manufacture by British Boly Limited in China mainland. The main product of company is medical electric saw and drill series, surgical instrument sets series, medical tourniquet and other surgical supplies.

The company has its own R&D team with strong technical force and advanced equipments and has got ISO13485, FDA, CE certificates.

Adhering to the concept of “gain market from quality, gain benefit from management”, focusing on the medical electric saw and drill, Ningbo Boly takes the market as the guidance, promotes scientific and technological innovation, builds the core competitiveness, continues to create more value for customers and to make the company growing stronger!



Finish machining corner



Inspection equipment

## 医用电动工具—升级型1000C 系列 Surgical Power Tools Improved Type (series 1000C)

- ★最新人体工程学设计, 使用更舒适 Newest Ergonomic design, more comfortable experience.
- ★整机135摄氏度高温高压消毒 Autoclavable 135°C
- ★高精度变速箱,性能更稳定 High precision gear box, more stable performance
- ★进口电机, 噪音低, 使用寿命长 Imported motor, lower noise, longer service life
- ★进口钻夹头 Imported chuck



### BL1101C

空心钻  
Canulate drill  
适用于创伤手术  
Applicable to trauma surgery



### BL1201C

两用空心钻  
Dual function Canulate drill  
标配快换钻夹头, 适用于创伤手术  
With quick-change chuck, applicable to trauma surgery



### BL1103AC

骨钻  
Bone drill  
适用于创伤手术  
Applicable to trauma surgery



### BL1204C

两用髋臼打磨钻  
Dual function Acetabulum reaming drill  
标配快换钻夹头, 适用于关节手术  
With quick-change chuck, applicable to joint surgery



### BL1102C

摆锯  
Oscillating saw  
适用于关节手术  
Applicable to joint surgery

## 主要附件 Main Accessories



BL0001  
电池 Battery



BL0002  
充电器Charger



BL0003  
消毒通道  
Aseptic transfer kit



BL0004A  
钥匙 Key



BL0006A  
锯片 Saw blade



## 医用电动工具 1000系列

### Surgical Power Tools (series 1000)

- ★ 技术工艺成熟, 高性价比 Mature technology, high cost-effective
- ★ 优质国产电机, 无级变速, 使用方便 Variable speed, convenient
- ★ 整机可135摄氏度高温高压消毒 Autoclavable 135℃

#### BL1101

空心钻  
Canulate drill  
适用于创伤手术  
Applicable to trauma surgery



#### BL1201

两用空心钻  
Dual function Canulate drill  
标配快换钻夹头, 适用于创伤手术  
With quick-change chuck, applicable to trauma surgery



#### BL1103A

骨钻  
Bone drill  
适用于创伤手术  
Applicable to trauma surgery



#### BL1203A

两用骨钻  
Dual function Bone drill  
标配快换钻夹头, 适用于创伤手术  
With quick-change chuck, applicable to trauma surgery



#### BL1103/AO

骨钻 (AO接口专用)  
Bone drill (AO)  
适用于创伤手术  
Applicable to trauma surgery



#### BL1102

摆锯  
Oscillating saw  
适用于关节手术  
Applicable to joint surgery



#### BL1104

髋臼打磨钻  
Acetabulum reaming drill  
适用于关节手术  
Applicable to joint surgery



#### BL1204

两用髋臼打磨钻  
Dual function Acetabulum reaming drill  
标配快换钻夹头, 适用于关节手术  
With quick-change chuck, applicable to joint surgery



#### BL1107

胸骨锯  
Sternum saw  
适用于心胸外科手术  
Applicable to cardiothoracic surgery



#### BL1106

颅骨铣  
Cranial bur  
适用于神经外科手术  
Applicable to neurosurgery



#### BL1109

往复锯  
Reciprocating saw  
适用于关节手术  
Applicable to joint surgery



#### BL1105

自停开颅钻  
Cranial drill  
标配快换开颅钻头, 适用于神经外科手术  
With quick-change drill bit, applicable to neurosurgery



### 主要附件 Main Accessories



BL0001  
电池 Battery



BL0002  
充电器 Charger



BL0003  
消毒通道  
Aseptic transfer kit



BL0004  
钥匙 Key



BL0006  
锯片 Saw blade



BL0015 (Φ7-Φ13)  
开颅钻头 Cranial drill bit

## 医用电动工具 2000系列 Surgical Power Tools (series 2000)

- ★精湛加工工艺, 进口电机, 使用更持久  
Exquisite processing technology, imported motor, durable
- ★无级变速, 使用方便 Variable speed, convenient
- ★整机可135摄氏度高温高压消毒 Autoclavable 135℃
- ★进口钻夹头 Imported chuck

### BL2101

空心钻  
Canulate drill  
适用于创伤手术  
Applicable to trauma surgery



### BL2201

两用空心钻  
Dual function Canulate drill  
标配快换钻夹头, 适用于创伤手术  
With quick-change chuck, applicable to trauma surgery



### BL2103

骨钻  
Bone drill  
适用于创伤手术  
Applicable to trauma surgery



### BL2102

摆锯  
Oscillating saw  
适用于关节手术  
Applicable to joint surgery



### BL2204

两用髋臼打磨钻  
Dual function Acetabulum reaming drill  
标配快换钻夹头, 适用于关节手术  
With quick-change chuck, applicable to joint surgery



## 主要附件 Main Accessories



BL0001  
电池 Battery



BL0002  
充电器 Charger



BL0003  
消毒通道  
Aseptic transfer kit



BL0004A  
钥匙 Key



BL0006A  
锯片 Saw blade

## 医用电动工具-4000 多功能系列 Surgical Power Tools Multi-function Type (series 4000)

- ★进口电机, 主机可驱动多种机头  
Handpiece can drive a variety of quick-change attachments
- ★机头拆装方便快捷 Assembly and disassembly easily
- ★整机可135℃高温高压消毒 Autoclavable 135℃

### ● 以下机头可用于多功能主机BL4001

The following 8 attachments can be equipped with multi-function handpiece BL4001



101A 空心钻机头  
Canulate drill attachment



102A 摆锯机头  
Oscillating saw attachment



103A 骨钻机头  
Bone drill attachment



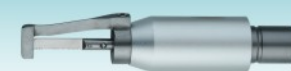
204A 两用型髋臼打磨钻机头  
Dual-function Acetabulum reaming drill attachment



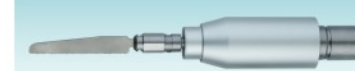
105A 开颅钻机头  
Cranial drill attachment



106A 颅骨铣机头  
Cranial bur attachment



107A 胸骨锯机头  
Sternum saw attachment



109A 往复锯机头  
Reciprocating saw attachment



### ● 多功能主机 Multi-function handpiece

### BL4001

工作电压:d.c. 14.4V  
Working voltage:d.c. 14.4V

## 主要附件 Main Accessories



BL0001  
电池 Battery



BL0002  
充电器 Charger



BL0003  
消毒通道  
Aseptic transfer kit



BL0004  
钥匙 Key



BL0006  
锯片 Saw blade



## 医用电动工具—小型锯钻8000 手外系列 Surgical Power Tools Micro Type (series 8000)

- ★机身轻巧, 携带方便 Light weight, small size, portable
- ★进口电机, 性能稳定 Imported motor, more stable performance
- ★适用于手足外科等小骨手术 Applied to hand & foot surgery or to veterinary



● 多功能主机  
Multi-function handpiece

- 以下机头可用于多功能主机BL8000  
The following 5 attachments can be equipped with multi-function handpiece BL8000



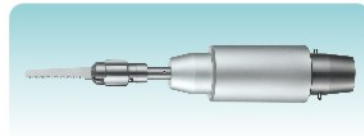
S101 空心钻机头  
Canulate drill attachment



S102 摆锯机头  
Oscillating saw attachment



S103 骨钻机头  
Bone drill attachment



S109 往复锯机头  
Reciprocating saw attachment



S111 克氏针机头  
K-wire drill attachment



BL8101  
空心钻  
Canulate drill  
适用于创伤手术  
Applicable to trauma surgery



BL8103  
骨钻  
Bone drill  
适用于创伤手术  
Applicable to trauma surgery



BL8102  
摆锯  
Oscillating saw  
适用于关节手术  
Applicable to joint surgery



BL8111  
克氏针钻  
K-wire drill  
适用于创伤手术  
Applicable to trauma surgery

### 主要附件 Main Accessories



BL0006B  
锯片 Saw blade



BL8001  
电池 Battery



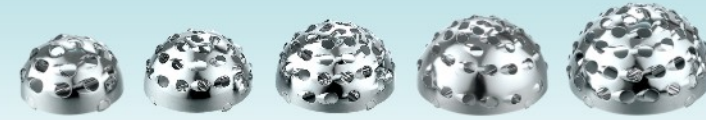
BL8002  
充电器 Charger



BL8004  
钥匙 Key



BL0003  
消毒通道  
Aseptic transfer kit



BL0011(Φ36-Φ64)  
髋臼锉头子  
Acetabulum reamer



BL0010  
髋臼锉连杆  
Detachable shaft



BL0014(Φ7.5-Φ13.5)  
髓内钉快换软扩铰刀头子  
Quick-change flexible medullary reamer



BL0013  
髓内钉快换软扩铰刀杆子  
Quick-change flexible medullary reamer shaft



BL0012  
髓内钉整体式软扩铰刀  
Flexible medullary reamer

- 医用钻头及铰刀  
Medical drill bit and reamer



BL0007  
钻头(Φ2-Φ4.5)  
Twist drill bit

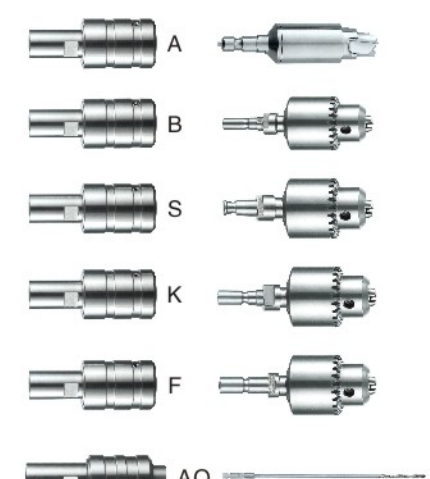


BL0017  
软钻  
Flexible drill bit



BL0016  
关节铰刀  
Joint reamer

- 快装接口  
Adaptor



通过以上快装接口可实现与各大公司不同接口相匹配  
Match with different connectors through the above adaptors



● **BL0008 上肢器械包**  
Orthopaedic instrument kit  
for upper limb



● **BL0009 下肢器械包**  
Orthopaedic instrument kit  
for lower limb



● **外接电源**  
External power

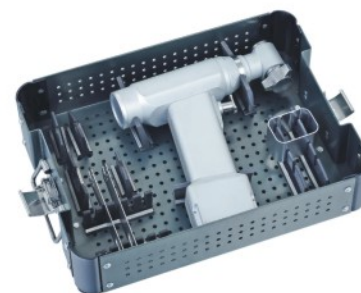
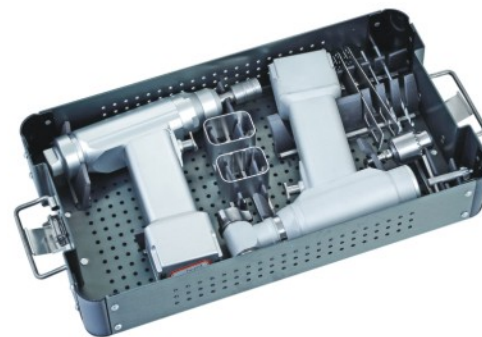
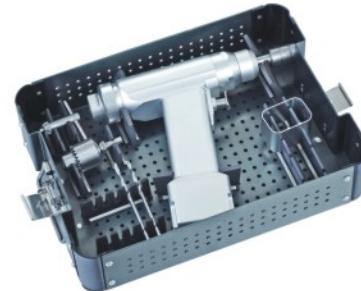
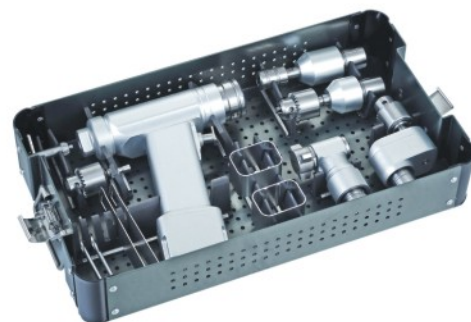


**BL0022**  
连接线  
Connection wire



**BL0021**  
电源控制台  
Power control

● **消毒盒**  
Sterilization case



● **一次性医疗用品**  
Disposable medical supplies  
Material:  
TPE latex free EOG  
Tasteless  
Non-toxic

**BLGJ108**



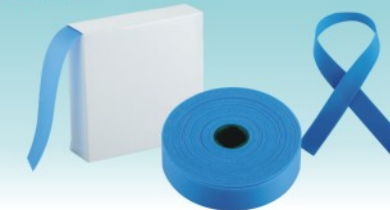
一次性使用输液护理包  
Disposable infusion care bag

**BLGJ107**



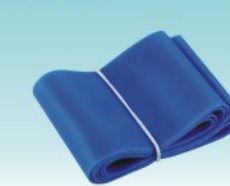
一次性使用采血护理包  
Disposable blood collection  
care bag

**BLGJ005**



一次性使用止血绑带  
Disposable tourniquet

**BLGJ105**



汽车急救包止血带  
Auto car tourniquet

**BLGJ103**



宽幅止血带  
Wide tourniquet